



Moonee Valley Racecourse
Redevelopment
Community Reference Group
6 Dec 2023



HAMTON™

Agenda

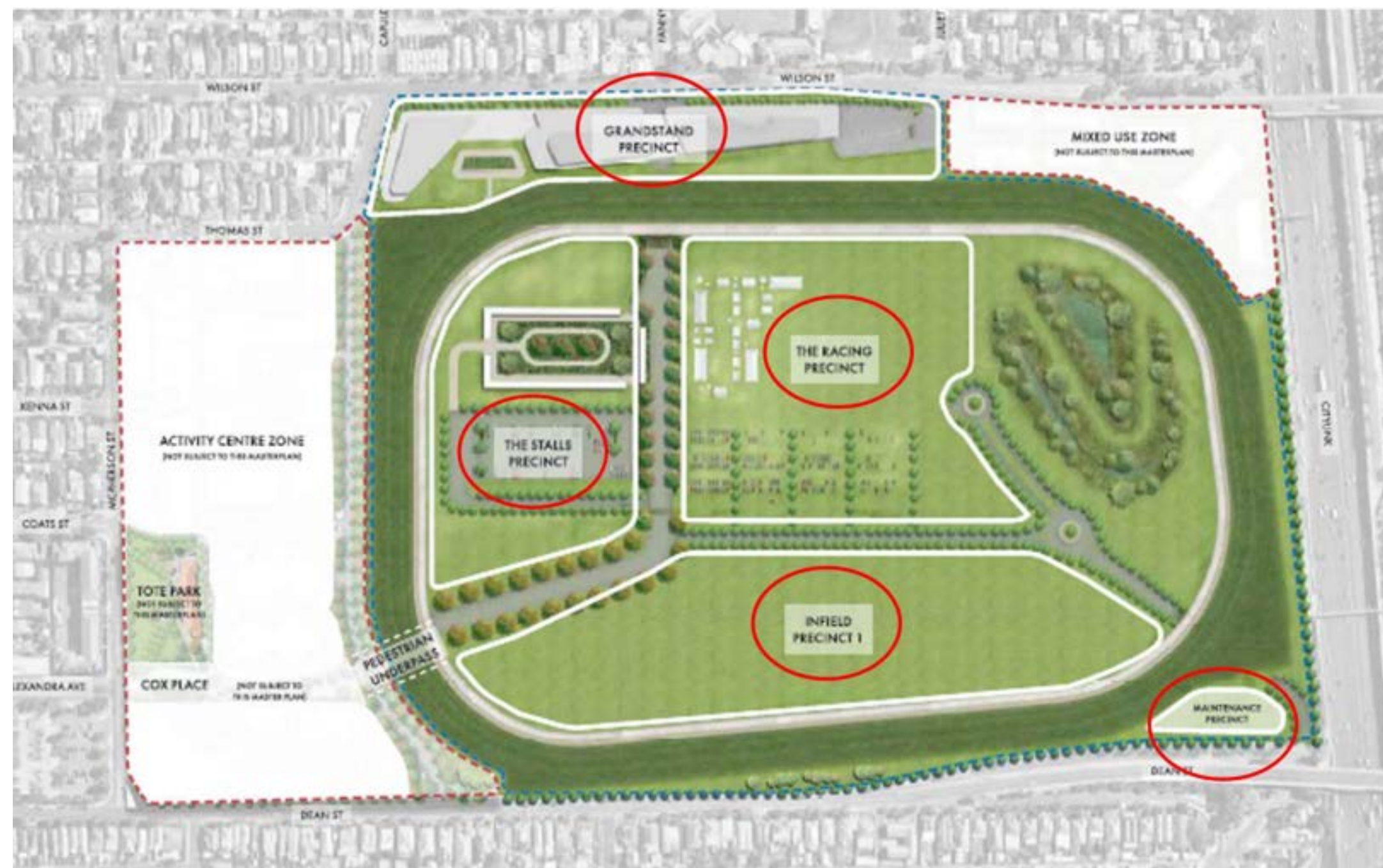
1. Introduction/Housekeeping
2. MVRC Projects – Masterplan (SUZ)
3. MVP Planning Update
4. MVP Construction Update
5. Community Activations
6. Other matters, wrap-up & next meeting



HAMTON™

MVRC Projects Masterplan (SUZ)

The approved **Masterplan** is the guiding reference document to inform critical infrastructure, service requirements, movement & access, and built form for the redevelopment of the Racecourse Precinct.



The Building & Works planning applications for the **Maintenance Precinct, the New Racetrack, Racing & Stalls Precincts** were approved in February and March 2023.

The **Grandstand Precinct** Building & Works application remains under review by Council.

Over the last period, the Club has facilitated a Community Information Session (11 October) and has met separately with the MPPS School Council (25 October).



HAMTON™

MVRC Projects Masterplan (SUZ) cont.

Infield Precinct

Through the MVRC's redevelopment vision and the approved Masterplan the Infield Precinct will play host to recreation and other activities for the community when the land is not being used for racing and non-racing events.

1. Infield Landscape & Activation Concept Design - Preliminary Draft for discussion purposes only

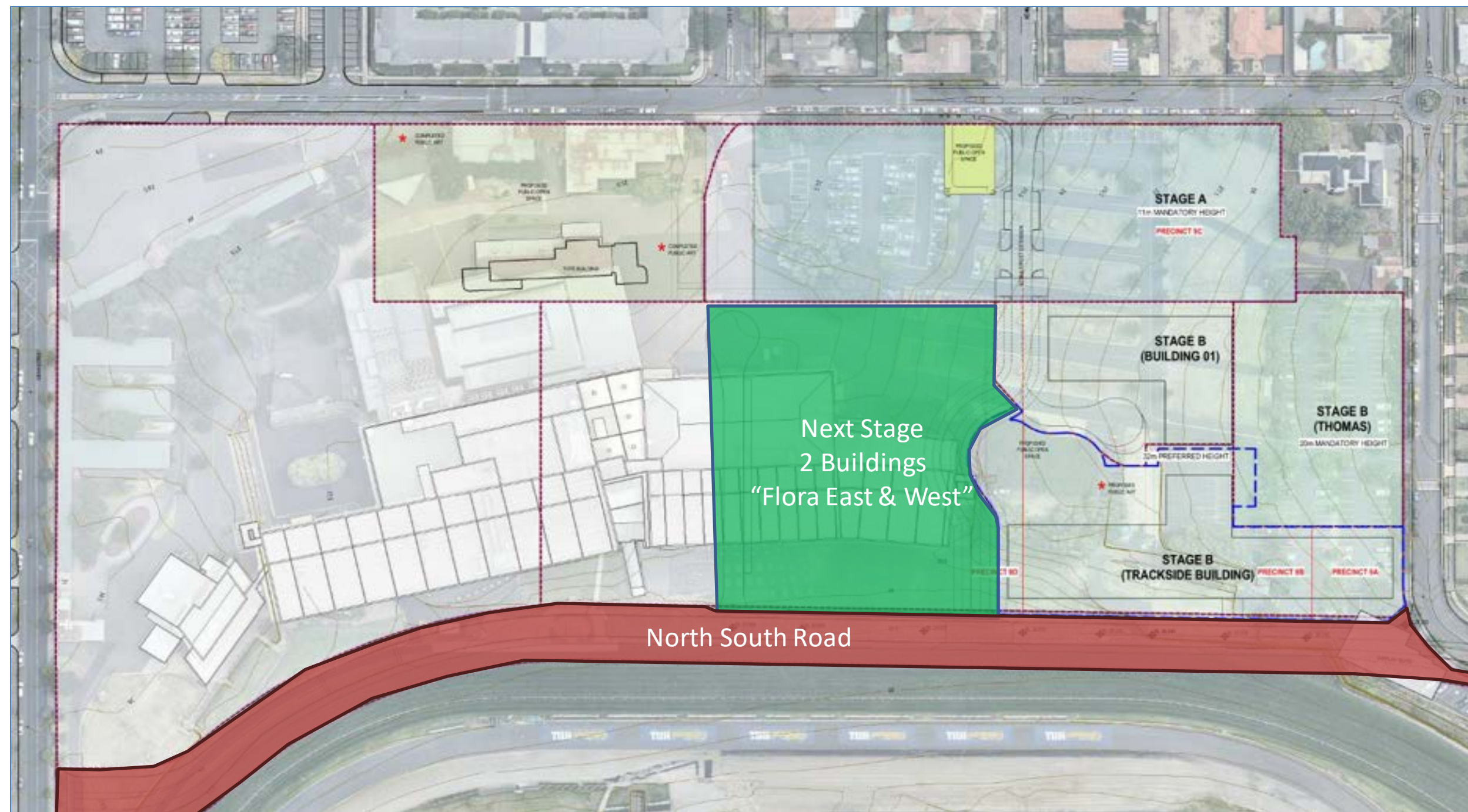
- Area 1:** 29,250sqm or approx. 185m x 160m
Suitable for:
- AFL
 - Cricket
 - 2 x Senior soccer or
 - 2 x Rugby Union or league
- Recommend line marking for multi-sports (pictured)
- Area 2:** 21,702 sqm or approx. 105m x 217m
Suitable for:
- 2 x Hockey (pictured)
 - 3 x Junior Soccer (single pictured)
 - 1 x Softball or Baseball
 - 12 x 5-a-side soccer or
 - Combination of the above
- Area 3:** 6,153sqm
Suitable for:
- Hard courts (b x netball, futsal, tennis or basketball)
 - Bowling green or Croquet lawn (pictured)
 - Combination of the above
- Note, we would require a small parking area south of the roundabout to make this area viable.
- Area 4:** 9920 sqm
Suitable for:
- Large regional adventure play space
 - Pubs and barbeque facilities
 - Skate park
 - Informal hard-court spaces e.g. half court basketball
 - Combination of the above
- Area 5:** Approx 1,500m
Suitable for running and walking track and could include nodes with exercise equipment. Also suitable for 5km 'parkrun' or just over 3 laps. Note, to incorporate track to inside of race track the underpasses will need to be extended.



The above concept design demonstrates the spatial opportunities for sporting and recreational uses.

Detailed planning for the “opening up” and activation of the Infield to facilitate considered and formalised recreational / community access is underway with discussions progressing with multiple stakeholders.

MVP Planning Update



”Flora East & West” Planning Permit Application (green shading on above diagram)

- Application lodged 1 August 2023.
- Hamton is working through RFI’s from Council.
- Construction commencement indication – early 2026 (post existing grandstand demolition).

”North South Road” Planning Permit Application (red shading on above diagram)

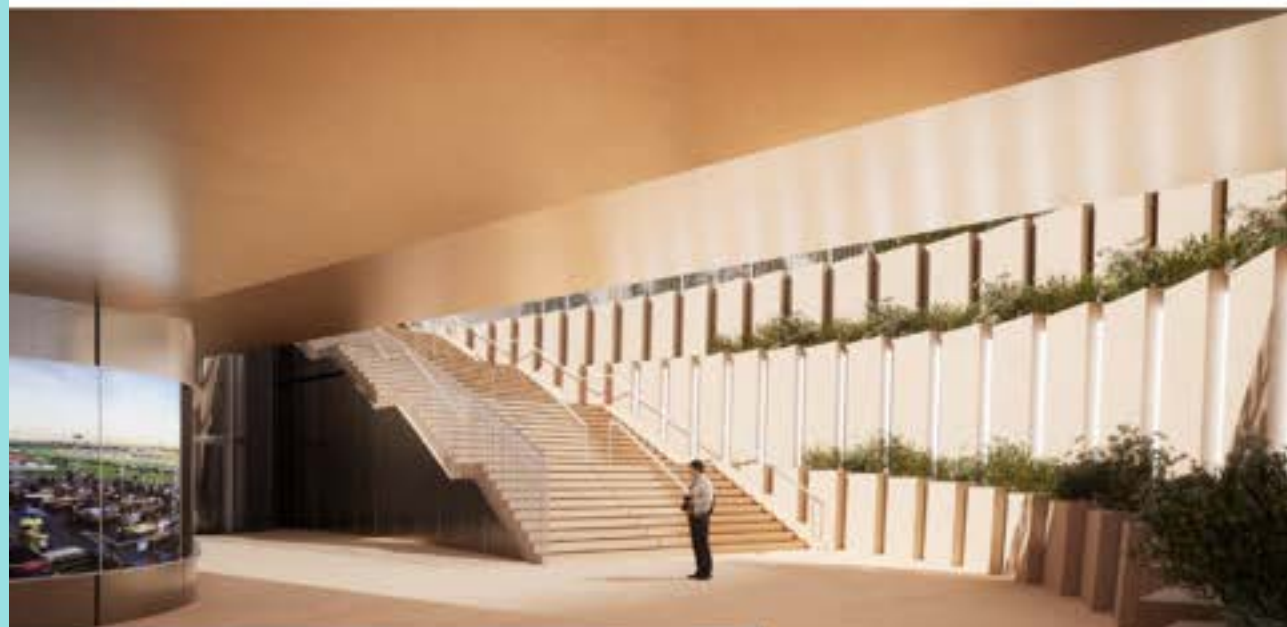
- Application lodged 29 November 2023.
- Application includes proposed future pedestrian access to MVRC infield (stair and lift)

MVP

Future Access to MVRC Infield – Concept Design



Plan View showing Cox Place, NSR, Cox Place VT and the MVRC Infield (Cox Architecture)



View from Underpass towards stairs leading to Cox Place (Cox Architecture)



Aerial view of NSR, the Cox Place VT and MVRC Racetrack (Cox Architecture)



HAMTON™

MVP

Construction Update

Feehan Row (Stage 2)

- Camillo Builders have continued to complete the Feehan Row townhouses in 6 blocks making good progress over recent months.
- Purchaser pre-settlement inspections have been completed
- Landscaping to all hard and soft areas has been completed
- Occupancy permit granted (29 Nov 2023)
- Settlements and move-ins due to occur mid-late Dec 2023



HAMTON™

MVP

Construction Update Cont.

Stonepine House & Trackside House

- Icon has completed all bulk excavation down to basement level 3 and all excavation equipment will be removed by end of 2023.
- Foundation piling commenced early Dec and Icon are planning to have basement 3 concrete slab at bottom of basement poured by end Jan 2024.
- 3 tower cranes to be erected by approximately mid-Feb 2024 as Icon commences the concrete structure works
- Program remains on schedule for completion in Q3 2025



HAMTON™

Community Activations

Spring Outside Kids' Day Out

Spring Outside Day was on Saturday 4th November in Tote Park, with footy fever activities in support of the Moonee Valley Football Club.

We saw over 130 kids participate in the free activities put on by MVP, and many additional families with younger children came to have faces painted and enjoy the sausage sizzle.

Beanbag Cinema

The Moonee Valley Park annual Beanbag Cinema will return in March 2025.

All details to be announced early in the new year.

Christmas at The Valley

With Christmas just around the corner, we've got a big Saturday of racing planned on 23rd Dec 2023.

Our junior jocks mascot, Crossword, the adorable Shetland, will be on track, and there will be a special visit from Santa.



HAMTON™

*Other Matters,
Wrap Up &
Next Meeting*



HAMTON™

Thank You



HAMTON™